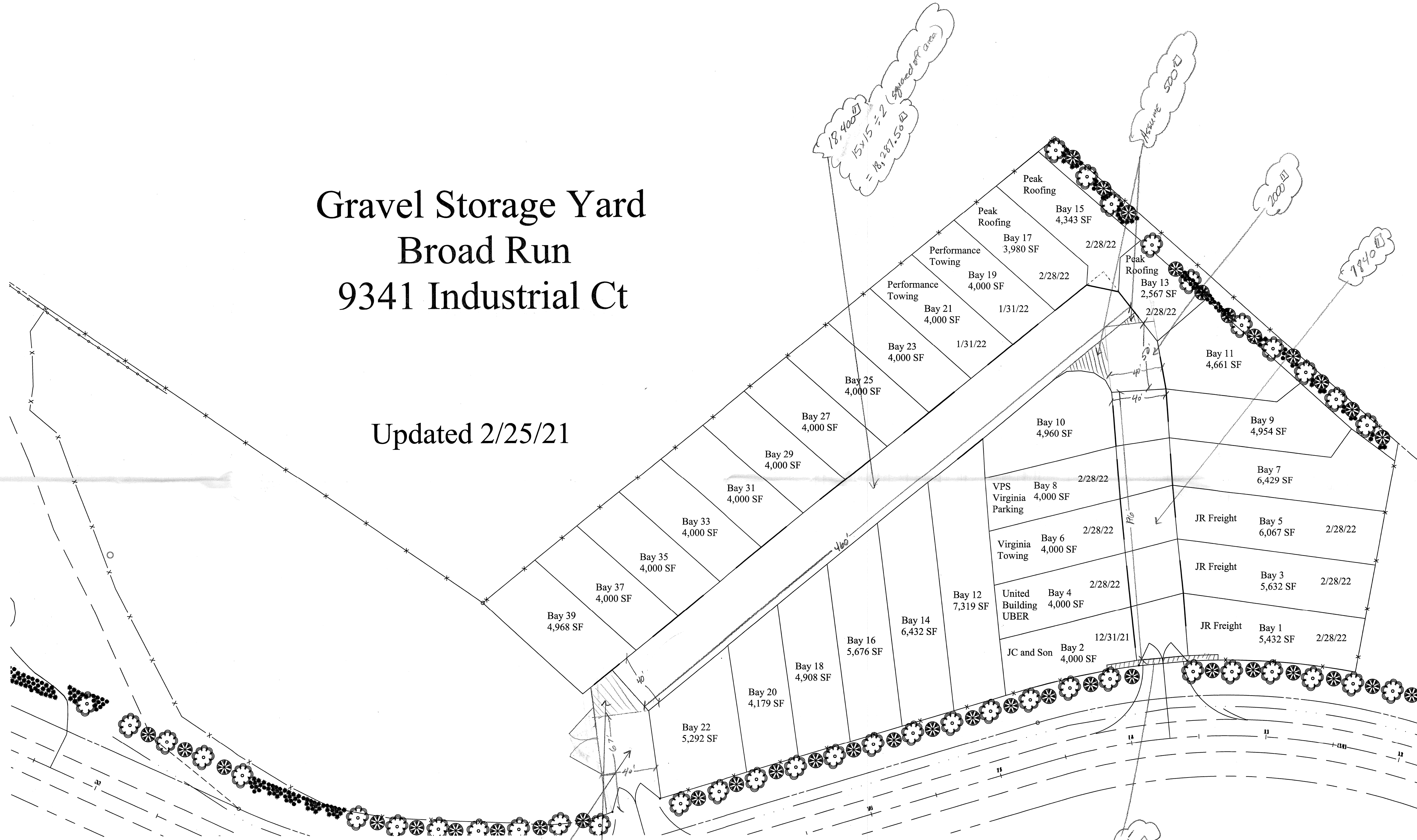


Gravel Storage Yard Broad Run 9341 Industrial Ct

Updated 2/25/21



"Phase I" travelway AREA
 = 29,042.50
 + 3,380
 = 32,422.50
 "Phase I" rentable area.
 = 142,831 \square

= "core factor" of 16%

"Phase II" rentable area
 = 59,000 \square
 Total Area 201,831 \square