

7M42A1-3

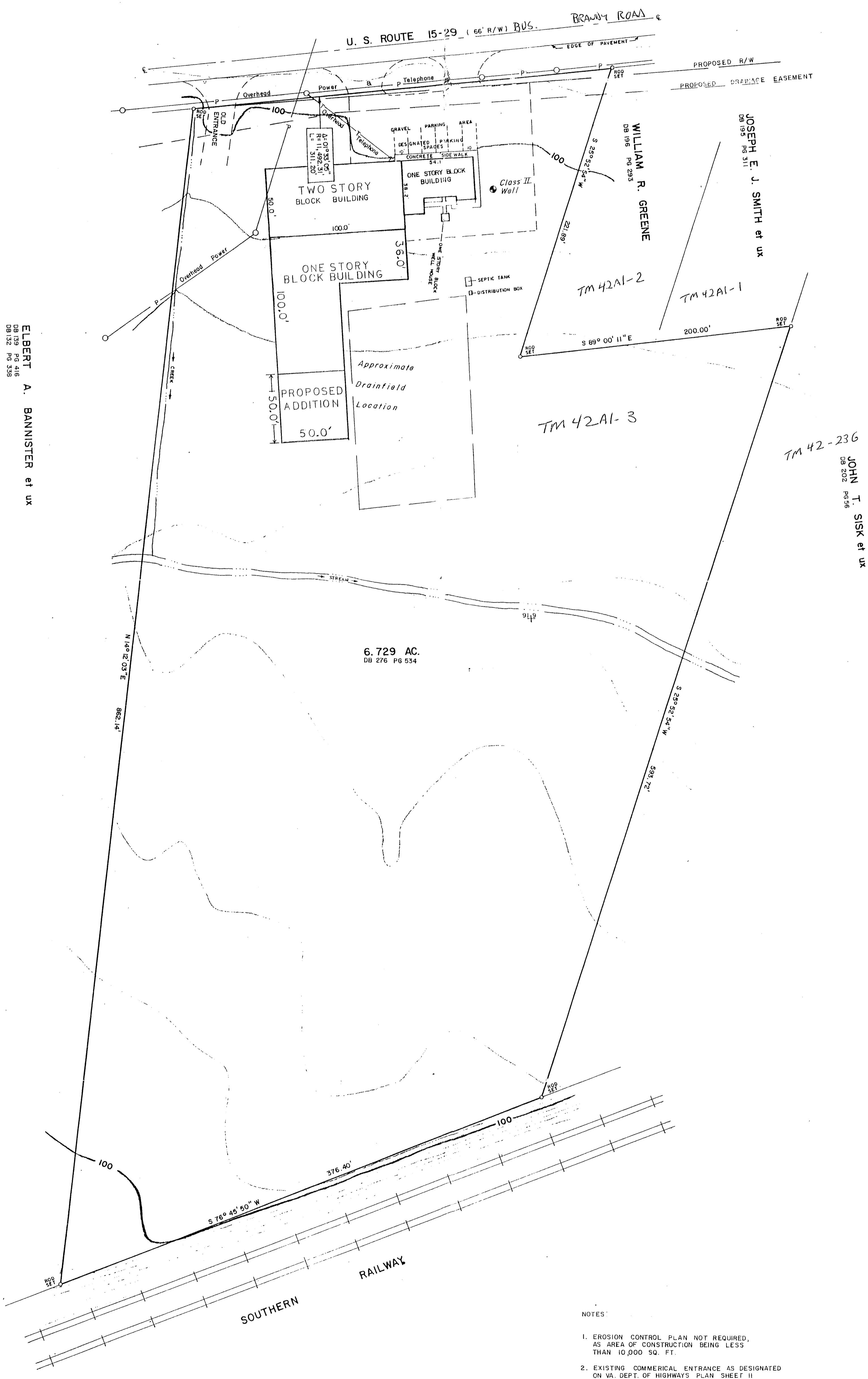
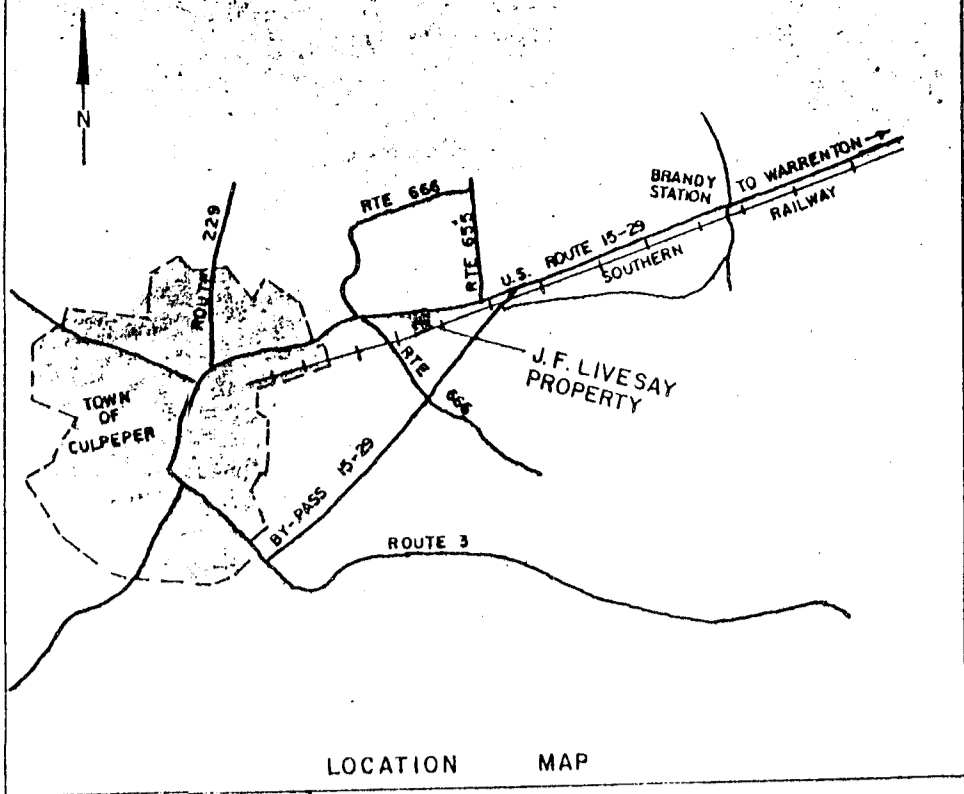
**SITE PLAN OF
JOHN F. LIVESAY PROPERTY**
CATALPA DISTRICT
CULPEPER COUNTY, VIRGINIA

BY
MILTON TERRY ESTES, C.L.S., INC.
SURVEYORS & PLANNERS
ORANGE, VIRGINIA

SCALE: 1" = 40'
2' CONTOUR INTERVAL

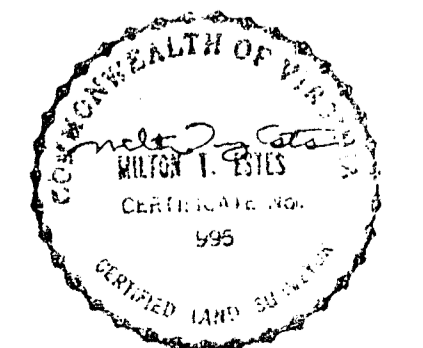
NOVEMBER 23, 1979
REVISED JULY 22, 1983
REVISED MAY 29, 1997

JOB NO. C-2997



ELBERT A. BANNISTER et ux
DB 199 PG 416
DB 132 PG 339

- NOTES:
1. EROSION CONTROL PLAN NOT REQUIRED, AS AREA OF CONSTRUCTION BEING LESS THAN 10,000 SQ. FT.
 2. EXISTING COMMERCIAL ENTRANCE AS DESIGNATED ON VA. DEPT. OF HIGHWAYS PLAN SHEET II PROJECT 0015-023-107



MILTON TERRY ESTES
C.L.S. NO. 995