

TWO OFFICE CONDOS FOR SALE/LEASE

20-B & 22-B John Marshall St
Warrenton, VA 20186



Two office condos for lease in Old Town Warrenton. Walk to shops and restaurants on Main St. Suites can be leased separately or combined.

20-B John Marshall St: 900 SF office suite includes three offices (including one corner office, conference room and a small break room. Quarterly Condo Fees: \$537.00. Lease Rate: \$1,475 a month plus utilities. Sales Price: \$210,000

22-B John Marshall St: 900 SF office suite includes five offices, small waiting area and kitchenette. Quarterly Condo Fees: \$566.00. Lease Rate: \$1,475 a month plus utilities. Sales Price: \$210,000

Combined Lease Rate: \$2,950 A Month, Plus Utilities

Combined Sales Price: \$420,000

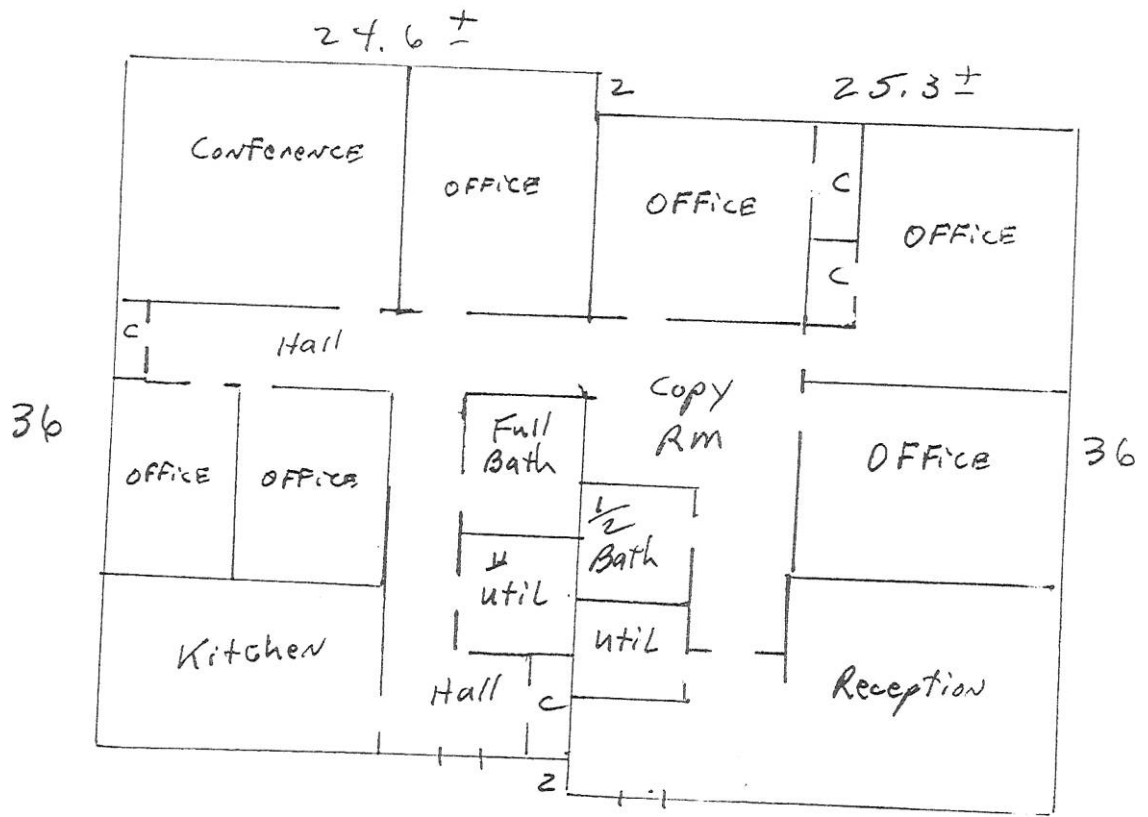


Edward B. Wright, III

9009 Sudley Road
Manassas, Virginia 20110

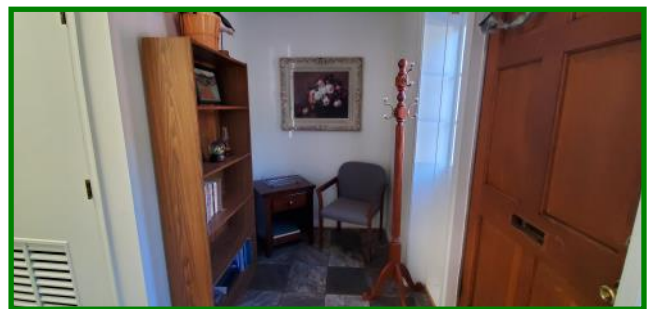
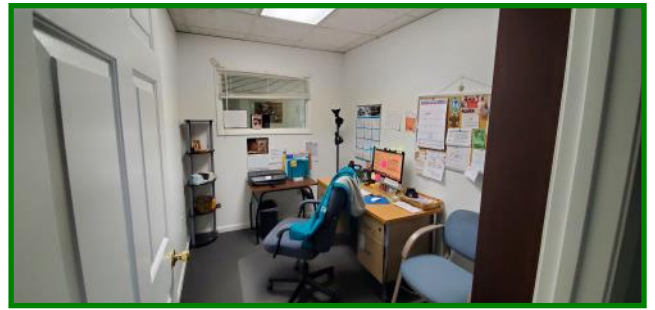
Phone: 703-368-8136
Fax: 703-368-7238
Email: ebw@wright-realty.com
Website: www.wright-realty.com

Offering subject to errors, omissions, prior sale, change in price, or withdrawal without notice.



Unit 4

Unit 5





3-4.10.5 Building Regulations

Use	Maximum Height*
Accessory buildings	shall be less than the main building in height.
Other Buildings	45 feet

** A public or institutional building or church may be erected to a height of sixty (60) feet from grade provided that required front, side, and rear yards shall be increased one (1) foot for each foot in height over forty-five (45) feet.

3-4.11 CBD Central Business District

3-4.11.1 Legislative Intent

Legislative Intent. The intent of this district is to provide for orderly development, infill and revitalization of the central business and commerce area of the Town of Warrenton in accordance with objectives, policies, and proposals of the Comprehensive Plan of the Town; and for the logical and timely development of the land for primarily business purposes providing for higher density residential development, especially on the upper floors of structures on Main Street and encouraging a lively retail environment at the street level of Main Street. The district is designed to encourage the following:

- Re-use of existing buildings in ways that are compatible with and supportive of the purposes of the district and of the Comprehensive Plan.
- Preservation of the unified, historic character of the district and its function as the retail and service center for Town citizens and visitors.
- The creation and reinforcement of the street as a public space, defined by buildings fronting the street, to create a harmonious pedestrian environment for Town citizens and visitors.
- Mixed uses within the district, including mixed uses within single structures.
- A uniformity of design to ensure the orderly arrangement of buildings, land uses, and parking areas, and all construction hereafter proposed for this area.
- A cohesive interrelationship of buildings in order to ensure a harmonious environment, allowing a degree of variety in building design provided said variety is within the overall historic, human-scale design framework of the district.
- Maximization of a beneficial interrelationship between vehicular facilities (streets and parking lots), pedestrian facilities (sidewalks, malls and plazas), and commercial establishments, with a particular focus on pedestrian, convenience and safety.
- The provision of adequate, appropriately located off-street parking facilities.

- The architectural design and arrangement of buildings and spaces so as to conform to the general character and plans of the district.

3-4.11.2 Permitted Uses (by-right)

- Accessory buildings
- Apartments
- Banks and other financial institutions, but not drive-in facilities
- Broadcasting stations
- Churches
- Cleaning and pressing shops limited to six (6) pressing machines, and four (4) dry cleaning machines
- Clinics - outpatient care only
- Community buildings
- Historic shrines and museums
- Institutional buildings
- Medical and dental offices/clinics
- Mixed Use structures
- Offices for business or professional use
- Off-street parking and load subject to Article 7
- Open space subject to Article 9
- Parking lots, in accord with supplemental regulations in Article 9 and parking lot standards, Article 7
- Personal service stores not exceeding three thousand (3,000) square feet in gross area, or within an existing space legally used for such purposes within the previous five years.
- Restaurants, without drive-in facilities
- Retail service stores not exceeding three thousand (3,000) square feet in gross area, or within an existing space legally used for such purposes within the previous five years
- Signs subject to Article 6
- Single-family detached dwelling units
- Studios and Trade Schools
- Theaters
- Townhouses and duplexes
- Utilities related to and necessary service within the Town, including poles, wires, transformers, telephone booths, and the like for electrical power distribution of communication service, and underground pipelines or conduits for local electrical, gas, sewer, or water service, but not those facilities listed as requiring a special use permit
- Vending machines

3-4.11.3 Permissible Uses (by special use permit upon approval of the Town Council)

- Active and passive recreation and recreational facilities
- Child care center, day care center, or nursery school
- Clubs and lodges
- Commercial parking lots and garages
- Commercial recreational establishments
- Drive-through facilities for banks and financial institutions
- Emergency housing
- Farmers markets
- Funeral homes
- Health and Fitness Facilities
- Hotels and motels, not exceeding seventy-five (75) rooms
- Hotels, Inns, Bed & Breakfasts, and Tourist Homes
- Medical centers and laboratories
- Parks and playgrounds.
- Printing establishments in excess of 3,000 square feet in gross area
- Rental service establishments, with no outside equipment storage.
- Retail, personal or business services, office, or restaurants in dwellings or apartment buildings
- Schools, including trade schools
- Small equipment sales and/or service operations
- Taxicab stands
- Water storage tanks, major transmission lines or pipelines, pumping or regulator stations, communications towers, and substations, and cable television facilities and accessory buildings

3-4.11.4. Lot and Yard Regulations

Use	Minimum	Minimum	Maximum	Minimum Setbacks		
	Lot Size (sq. ft.)	Lot Frontage (at front setback)	Lot Coverage (impervious surfaces)	Front	Side	Rear
Commercial Uses	3,000	none	none	none	None to C or I District; 25 ft. to R District	None to C or I District; 25 ft. to R District
Other Permitted and Permissible Uses	None	none	none	none	None to C or I District; 25 ft. to R District	None to C or I District; 25 ft. to R District

Use	Minimum	Minimum	Maximum	Minimum Setbacks		
	Lot Size (sq. ft.)	Lot Frontage (at front setback)	Lot Coverage (impervious surfaces)	Front	Side	Rear
Mixed-use structures	None	none	none	none	none	None to C or I District; 20 ft. to R District
Apartments (if stand-alone, non-mixed-use structure)	None	none	85%	none	None to C or I District; 20 ft. to R District	None to C or I District; 20 ft. to R District
Single Family Dwellings	none	50 ft.	none	none	None to C or I District; 20 ft. to R District	None to C or I District; 20 ft. to R District

3-4.11.5 Building Regulations

Use	Maximum Height*	Yards
All main buildings	45 feet by right 75 feet by Special Use Permit	
Accessory buildings	Within 10 feet of any lot line shall not exceed 15 feet in height. All accessory buildings shall be less than the main building in height	All non-residential accessory buildings shall satisfy setback requirements

* Side and rear yards adjacent to any other C or I district shall be increased one (1) additional foot of building height above thirty-five (35) feet;

* Side and rear yards adjacent to any R district shall be increased two (2) additional feet for each one (1) foot of building height above thirty-five (35) feet.

3-4.11.6 Use Limitations

1. Apartments are a permitted use in the district; however, apartments are prohibited on the ground floor except by Special Use Permit.
2. Apartment densities shall not exceed twenty-five (25) dwelling units per gross acre.

3-4.12 I Industrial District

3-4.12.1 Legislative Intent

It is the intent of this district to implement the Town's Comprehensive Plan by providing for a variety of light manufacturing, fabricating, processing, wholesale distributing, and warehousing uses appropriately located for access by highways and providing a controlled environment within which signing is limited, uses are to be conducted generally within completely enclosed buildings, and a moderate amount of landscaping is required. In order to preserve the land for industry, to reduce extraneous traffic, and avoid future conflicts between industry and other uses, business and service uses are limited primarily to those which will be useful to employees in the district and future residential uses are restricted.

3-4.12.2 Permitted Uses (by-right)

- Accessory buildings
- Active and Passive Recreation and Recreational Facilities
- Banks and savings and loan offices
- Broadcasting studios and offices
- Business and office supply establishments
- Cabinet, upholstery, and furniture shops
- Cafeteria or snack bar for employees
- Clinics, medical or dental
- Commercial uses constituting up to 15% of permitted site or building area
- Conference Centers
- Contractor's office and warehouse without outdoor storage
- Crematory
- Dwellings for resident watchmen and caretakers employed on the premises
- Employment service or agency
- Flex Office and Industrial uses
- Health and Fitness Facilities
- Institutional buildings
- Janitorial service establishment
- Laboratories, research, experimental or testing, but not testing explosives, rockets, or jet engines
- Light manufacturing uses which do not create danger to health and safety in surrounding areas and which do not create offensive noise, vibration, smoke, dust, lint, odor, heat, glare, or electrical impulse than that which is generally associated with light industries
- Mobile Food Vendors as permitted per Article 9-24
- Monument sales establishments with incidental processing to order but not including shaping of headstones