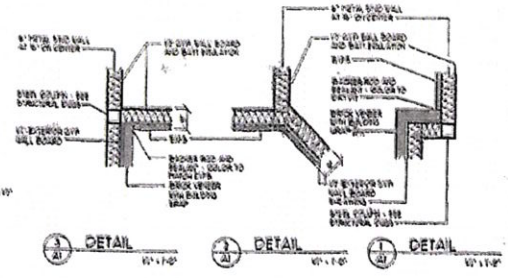


- 1 SEE SHEET A-11 FOR SHELVING IN CLOSETS: EG. 31 140 AND 142
- 2 SEE SHEET A-11 FOR ROO AND SHELF AT CLOSET #13
- 3 SEE SHEETS A-5 AND 4-10 FOR CABINETRY DETAILS



MEDICAL OFFICE BUILDING
 14370 LEE HIGHWAY ROUTE 29
 GAINESVILLE, VIRGINIA 20155
 PRINCE WILLIAM COUNTY

ROBERT B. LOVELESS, AIA
 ARCHITECTS
 1000 QUINCY STREET, ALEXANDRIA, VA 22304-1000

FLOOR PLAN

DATE: 3-14-87 PLAN: 3-14-87 BOOK: REVISIONS:

A-1
 OF 18

↑ FLOOR PLAN
 ↑
 Front of Building